



Background Information

In line with the Master Development Roadmap 2040 and Sectoral Development Roadmap 2017-2022 in collaboration with Dr.

Cecilia N. Gascon's Institutional Development Framework to align the development plans of BulSU with the National Government's goal in "Ambisyon Natin 2040", and transform BulSU from a Teaching University to a Research University, then an Entrepreneurial University

by 2030, and finally a Sustainable University by 2040, 12 Regional Development Centers are established to successfully achieve this plan.

The Center for New Gravity, under the Development and Innovation Office - Regional Development Centers, will be in charge of data and map generation for all Regional Development Centers as well as other institutions utilizing Geographic Information Systems and techniques.

Vision

The Center for New Gravity's vision is to become a center of excellence, building a data-driven and geospatially-empowered region.

Mission

Provide research institutions, community and government organizations with reliable, accurate, and up-to-date maps, charts, and scientific data for the goal of sustainable and inclusive growth in innovation and Science culture in the region.

Goals

- I. Research recent trends, breakthroughs, and applications in the field of Geographic Information Systems.
- II. Develop sustainable Geographic Information Systems and Platforms that will greatly benefit the community, the environment and will be valuable for further research.
- III. Facilitate greater adoption of Geographic Information Systems for Bulacan State University, Industry, Community, and other Institutions.

**CNG
GIS**

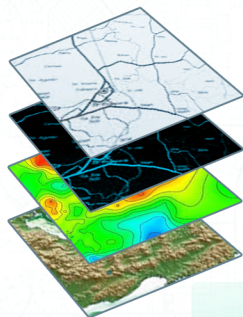


Contact us:

Cybernetics RDC
CNG-GIS Center
BulSU Research Building (Campus 2),
Brgy. Guinhawa, City of Malolos, Bulacan
cngcenter.dio.rde@bulsu.edu.ph

What is Geographic Information System?

GIS: (Geographic Information System) is an "organized collection of computer hardware, software, geographic data and personnel designed to efficiently capture, store, update, manipulate, analyze and display all forms of geographically referenced information" (Adewale, A.G. et al, (2016)).



Center for New Gravity for Geographic Information System

The CNG Center intends to close the gap in the region's and Philippines' adoption of modern and advanced GIS technologies and practices in data gathering, data processing and data visualization. The generated data will allow not just the Center, but also other development centers, BulSU, community, and government organizations to plan efficiently on what to develop that will have a significant impact on various possible applications.

The center will focus in these eight primary components with the possibility of having additional component/s if fully implemented.



Services Offered

GEOGRAPHIC INFORMATION SYSTEM

BASIC GIS			
Code	Pre-requisite	Duration	Training Fee
CNG-GIS-01	Basic Computer Operations	40hrs	Online: PHP 4,500 Onsite: PHP 7,000

GIS FOR EXECUTIVES			
Code	Pre-requisite	Duration	Training Fee
CNG-GIS-02	Basic Computer Operations	4hrs	Online: PHP 1,300 Onsite: PHP 1,300

ADVANCED GIS			
Code	Pre-requisite	Duration	Training Fee
CNG-GIS-03	Basic GIS taken at the CNG Training Center or passed the CNG Training Center assessment on Basic GIS	40hrs	Online: PHP 4,500 Onsite: PHP 7,000

UNMANNED AERIAL VEHICLE (UAV) MAPPING FOR GIS

Code	Pre-requisite	Duration	Training Fee
CNG-GIS-04	Basic GIS taken at the CNG Training Center or passed the CNG training center assessment on Basic GIS	40hrs	Onsite: PHP 7,000

FOR PACKAGED OR OFFSITE TRAINING

TRAINING FEE	
Offsite: PHP70,000	Online: PHP45,000

Services Offered

GLOBAL NAVIGATION SATELLITE SYSTEM (GNSS)

Code	Pre-requisite	Duration	Training Fee
CNG-GIS-05	<ul style="list-style-type: none"> Basic computer operations Surveying principles 	40hrs	Onsite: PHP 7,000

TRAINING PROGRAMS ON DEMAND

DATA VISUALIZATION			
Code	Pre-requisite	Duration	Training Fee
CNG-GIS-06	<ul style="list-style-type: none"> Basic computer operations 	40hrs	Online: PHP 4,500 Onsite: PHP 7,000

HTML			
Code	Pre-requisite	Duration	Training Fee
CNG-GIS-07	<ul style="list-style-type: none"> Basic computer operations 	40hrs	Online: PHP 4,500 Onsite: PHP 7,000

REQUIREMENTS

For GTC or Onsite Training

Minimum of 15 and Maximum of 25 participants may be confirmed for registration. The training venue is at Bulacan State University BLITS Park - CNG Training Center. The course fee is inclusive of Morning, lunch, and afternoon snacks.

For more info, please visit our website at <https://bulsu-cngcenter.com>